

# SUNCUE CIRCULATING GRAIN DRYER

**SUPER-60 · SUPER-120 · SUPER-300 · SUPER-600B**

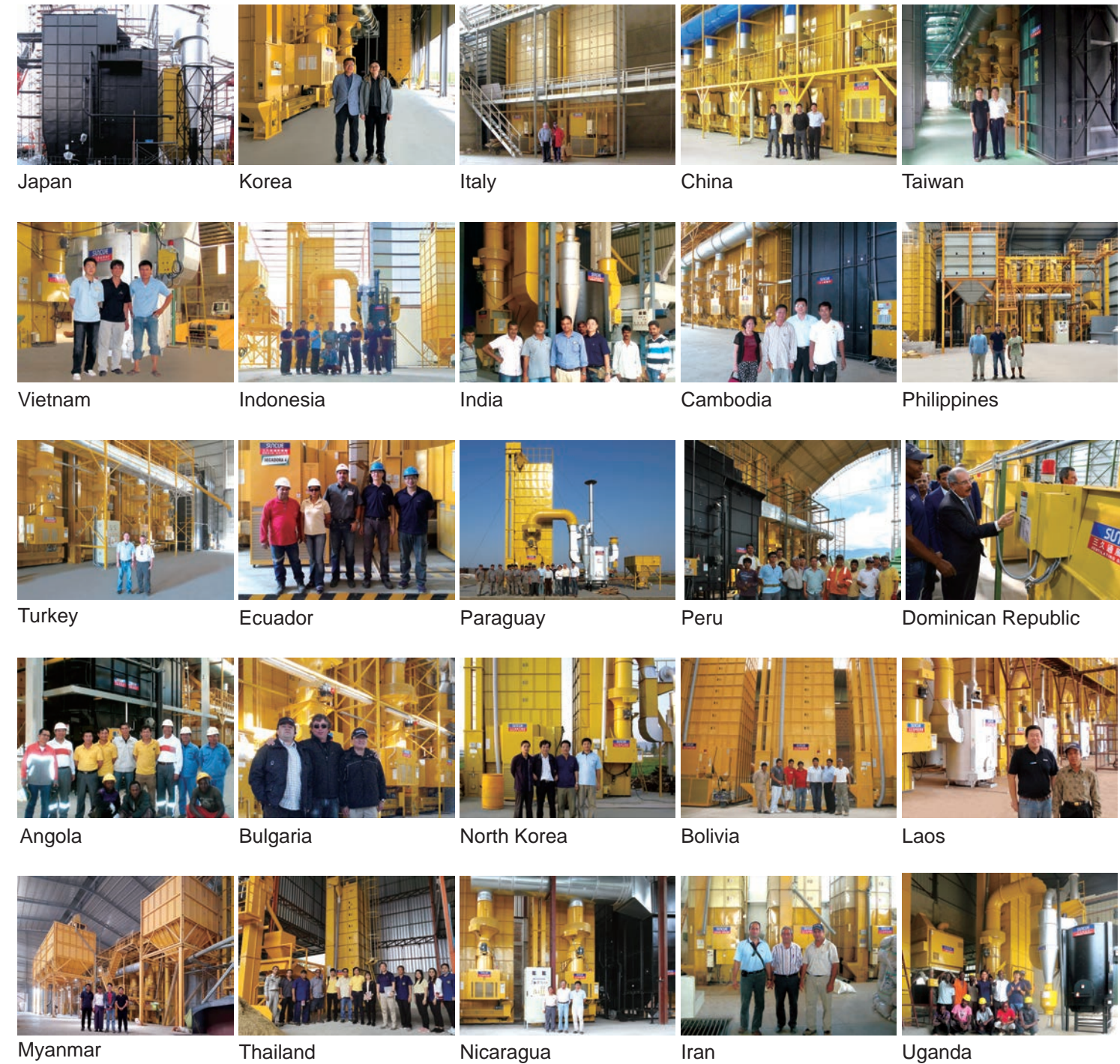
- The low-temp., even and speedy drying minimizes broken rice, raises milling rate and produces beautiful rice.
- The entire dryer is designed to be strong and sturdy, making it suitable for heavy-duty.
- With foolproof design, users can produce high-quality rice from the 1<sup>st</sup>, 100<sup>th</sup> to 1000<sup>th</sup> batch. Small-package rice consistent in quality will be available to customers.
- Automatic moisture control prevents over-drying and weight loss.
- By using self-milled free rice husk, users no longer need to spend on diesel, natural gas or electricity as dryers' heat sources.



SUPER-60      SUPER-120      SUPER-300      SUPER-600B

Heat Source	Model	SUPER-60	SUPER-120	SUPER-300	SUPER-600B
Diesel		●	●	●	—
Gas		●	●	●	—
Biomass		●	●	●	●
Diesel & Husk Dual		—	●	●	—
Gas & Husk Dual		—	●	—	—
Steam		—	●	●	—

## SUNCUE AROUND THE WORLD



Japan      Korea      Italy      China      Taiwan

Vietnam      Indonesia      India      Cambodia      Philippines

Turkey      Ecuador      Paraguay      Peru      Dominican Republic

Angola      Bulgaria      North Korea      Bolivia      Laos

Myanmar      Thailand      Nicaragua      Iran      Uganda

## HONOR & RECOGNITION OF SUNCUE

Gold medal  
at the iENA 2012  
in Nuremberg, Germany



World Genius Convention 2013 in Tokyo, Japan  
Special Genius Award      Genius Gold Medal



Invention and Creation  
Awards of Taiwan-  
Contribution Award



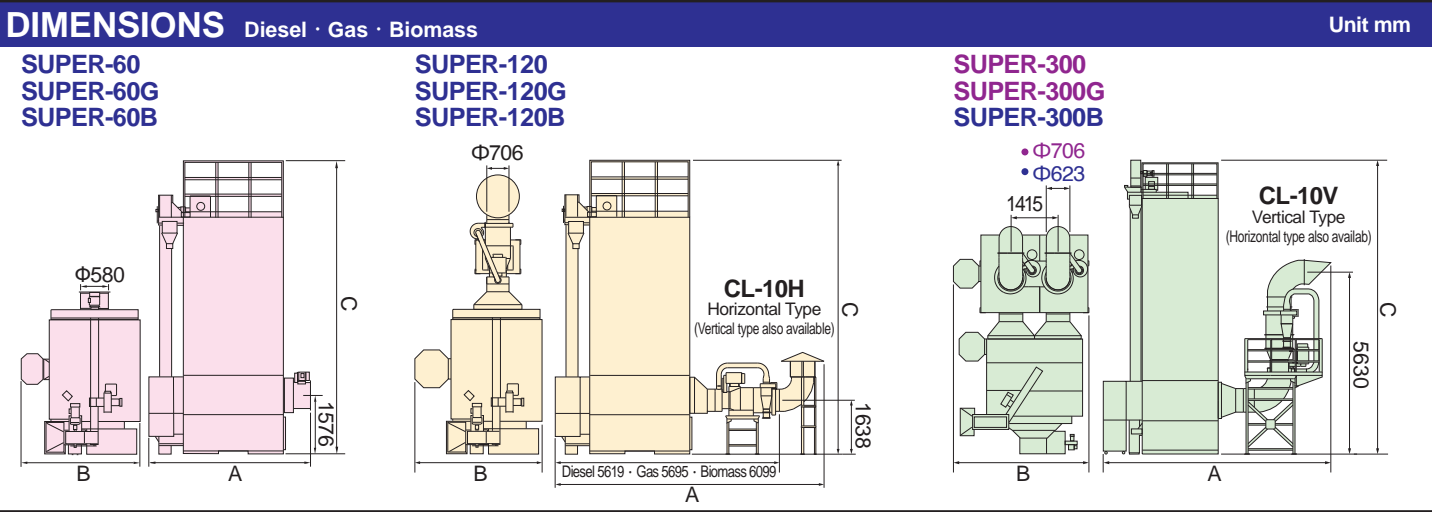
Invention Award  
of Taiwan



TAIWAN  
EXCELLENCE  
2021





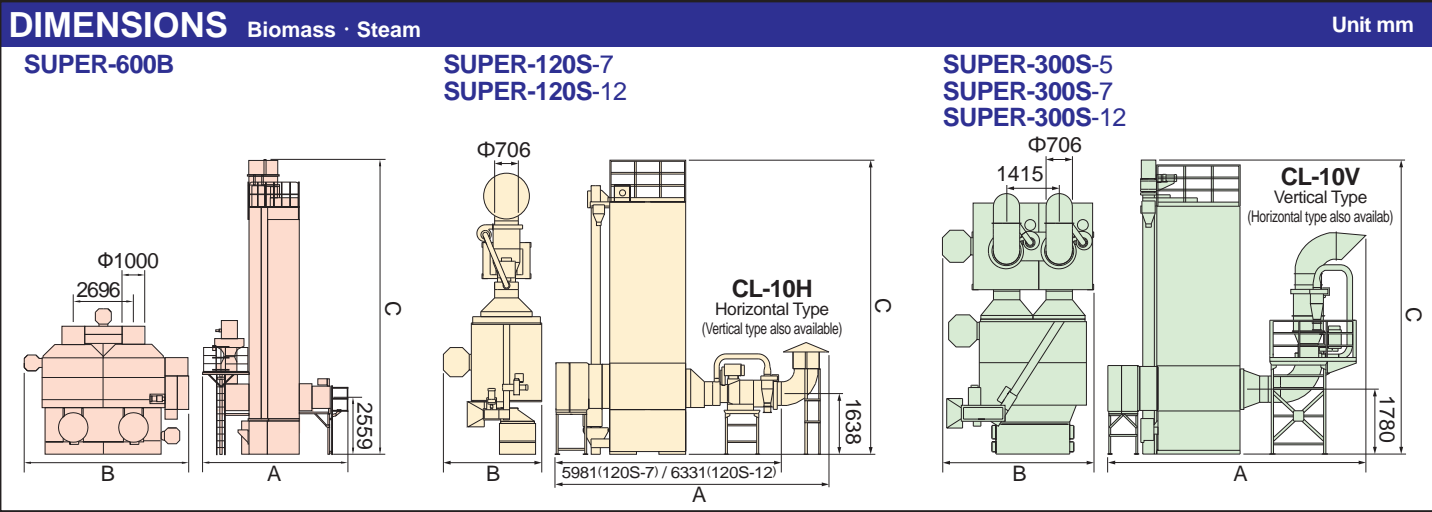


SPECIFICATIONS			Diesel · Gas							
Model			SUPER-60		SUPER-120		SUPER-300			
Item										
Heat Source			Kerosene or Premium Diesel*							
Type			Gun type							
Combustion			Approx. liter/hr		4.4~11		6.7~14.5		17.5~35	
Capacity	Paddy		1 liter=560g		2,500~6,000		2,800~12,000		4,000~30,000	
	Wheat		1 liter=680g		3,035~7,285		3,400~14,550		5,000~36,400	
	Corn Animal Feed		1 liter=690g		3,080~7,390		3,450~14,760		5,000~36,900	
Dimension	Without CL-10		LxWxH (A)x(B)x(C) mm		3,270x2,660x6,220		3,609x2,660x9,602		4,786x3,786x11,629	
	With CL-10	Horizontal Type	—		7,054x2,660x9,602		7,896x3,786x11,629			
		Vertical Type	—		Please contact the sales department		6,997x4,031x11,629			
Net Weight	Without CL-10		Approx. kg		1,785		2,290		5,150	
	With CL-10	Horizontal Type	—		2,887		6,290			
		Vertical Type	—		Please contact the sales department		6,623			
Power Consumption	Without CL-10		kW		1P:3.1    3P:4.07		6.3		13.48	
	With CL-10		—		10.1		21.05			
Function	Loading		Approx. mins		30		60		65	
	Discharging		Approx. mins		41		58		70	
	Drying Rate		% /hr		0.5~1.5					
Electricity			1P/3P, 220V/380V/415V/440V, 50/60Hz			3P, 220V/380V/415V/440V, 50/60Hz				
Safety Devices			Thermo-over relay, Air pressure switch, Full load buzzer, Timer, Flame sensor, Control fuse, Abnormal combustion sensor							

\*Use high-quality kerosene or premium diesel only

Model		Item		SUPER-60G		SUPER-120G		SUPER-300G	
Heat Source		LPG		NG		LPG		NG	
Max. Combustion		Approx.		12.6kg/hr≒174kW	13.6m³/hr≒174kW	16.6kg/hr≒233kW	18.2m³/hr≒233kW	41.6kg/hr≒581kW	45.5m³/hr≒581kW
Type		Gun type							
Capacity Approx. kg	Paddy	1 liter=560g		2,500~6,000		2,800~12,000		4,000~30,000	
	Wheat	1 liter=680g		3,035~7,285		3,400~14,550		5,000~36,400	
	Corn Animal Feed	1 liter=690g		3,080~7,390		3,450~14,760		5,000~36,900	
Dimension LxWxH (A)x(B)x(C) mm	Without CL-10		3,317×3,232×6,220		3,685×3,250×9,602		4,786×4,112×11,629		
	With CL-10	Horizontal Type	—		7,130×3,250×9,602		7,896×4,112×11,629		
		Vertical Type			Please contact the sales department		6,997×4,171×11,629		
Net Weight Approx. kg	Without CL-10		1,785		2,290		5,150		
	With CL-10	Horizontal Type	—		2,887		6,290		
		Vertical Type			Please contact the sales department		6,623		
Power Consumption kW	Without CL-10		1P:3.3    3P:4.25		6.4		13.8		
	With CL-10		—		10.2		21.4		
Function Paddy	Loading    Approx. mins		30		60		65		
	Discharging    Approx. mins		41		58		70		
	Drying Rate    %/hr				0.5~1.5				
Electricity		1P/3P, 220V/380V/415V/440V, 50/60Hz				3P, 220V/380V/415V/440V, 50/60Hz			
Safety Devices		Thermo-over relay, Air pressure switch, Full load buzzer, Timer, Flame sensor, Control fuse, Abnormal combustion sensor							

• Above numbers and drying rate are derived from reducing moisture in paddy from 26% to 15%, wheat/corn from 30% to 12.5% — for reference only. Actual results vary among different ambient temperature, relative humidity, grain varieties, hot air temperature, moisture content before and after drying. • Please apply low hot air temperature for drying paddy to prevent high breakage rate. • The specifications of burner shown above are Japanese standard (Thermal energy: NG 11,000 Kcal/m³; LPG 12,000 Kcal/kg). Please consult with SUNCUE for burner with CE standard. • The user shall prepare dust collecting bags when using CL-10 without a central dust collecting system. • Different platform, rain hood, exhaust chamber, exhaust pipe, stand, balustrade and other accessories are required for each dryer and CL-10 model. • Gas pipe lines have to be built by certified local professionals. NEVER do it by yourself.



SPECIFICATIONS		Biomass · Steam			
Model		Item			
		Item			
		Item			
		Item			
		Item			
		Item			
		Item			
		Item			
		Item			
		Item			
		Item			
		Item			
		Item			
		Item			
		Item			
		Item			
		Item			
		Item			
		Item			
		Item			
		Item			
		Item			
		Item			
		Item			
		Item			
		Item			
		Item			
		Item			
		Item			
		Item			
		Item			
		Item			
		Item			
		Item			
		Item			
		Item			
		Item			
		Item			
		Item			
		Item			
		Item			
		Item			
		Item			
		Item			
		Item			
		Item			
		Item			
		Item			
		Item			
		Item			
		Item			
		Item			
		Item			
		Item			
		Item			
		Item			
		Item			
		Item			
		Item			
		Item			
		Item			
		Item			
		Item			
		Item			
		Item			
		Item			
		Item			
		Item			
		Item			
		Item			
		Item			
		Item			
		Item			
		Item			
		Item			
		Item			
		Item			
		Item			
		Item			
		Item			
		Item			
		Item			
		Item			
		Item			
		Item			
		Item			
		Item			
		Item			
		Item			
		Item			
		Item			
		Item			
		Item			
		Item			
		Item			
		Item			
		Item			
		Item			
		Item			
		Item			
		Item			
		Item			
		Item			
		Item			
		Item			
		Item			
		Item			
		Item			
		Item			
		Item			
		Item			
		Item			
		Item			
		Item			
		Item			
		Item			
		Item			
		Item			
		Item			
		Item			
		Item			
		Item			
		Item			
		Item			
		Item			
		Item			
		Item			
		Item			
		Item			
		Item			
		Item			
		Item			
		Item			
		Item			
		Item			
		Item			
		Item			
		Item			
		Item			
		Item			
		Item			
		Item			
		Item			
		Item			
		Item			
		Item			
		Item			
		Item			
		Item			
		Item			
		Item			
		Item			
		Item			
		Item			
		Item			
		Item			
		Item			
		Item			
		Item			
		Item			
		Item			
		Item			
		Item			
		Item			
		Item			
		Item			
		Item			
		Item			
		Item			
		Item			
		Item			
		Item			
		Item			

Thermo-over relay, Air pressure switch, Full load buzzer, Timer, Control fuse, Rotation sensor

Model Item		SUPER-120S		SUPER-300S			
		7	12	5	7	12	
Heat Source		Steam					
Capacity Approx. kg	Paddy 1 liter=560g	2,800~12,000		4,000~30,000			
	Wheat 1 liter=680g	3,400~14,550		5,000~36,400			
	Corn Animal Feed 1 liter=690g	3,450~14,760		5,000~36,900			
Dimension LxWxH (A)x(B)x(C) mm	Without CL-10	3,971x2,660x9,602	4,321x2,660x9,602	4,302x3,786x11,629	4,395x3,786x11,629	4,745x3,786x11,629	
	With CL-10	Horizontal Type	7,416x2,660x9,602	7,766x2,660x9,602	7,412x3,786x11,629	7,505x3,786x11,629	7,855x3,786x11,629
		Vertical Type	Please contact the sales department		6,513x4,031x11,629	6,606x4,031x11,629	6,956x4,031x11,629
Net Weight Approx. kg	Without CL-10	2,453	2,558	5,210	5,265	5,420	
	With CL-10	Horizontal Type	3,050	3,155	6,350	6,405	6,560
		Vertical Type	Please contact the sales department		6,683	6,738	6,893
Power Consumption kW	Without CL-10	6.25		13.1			
	With CL-10	10.05		20.7			
Function Paddy	Loading Approx. mins	60		65			
	Discharging Approx. mins	58		70			
	Drying Rate %/hr	0.5~1.5					
Applicable Region		Regular	Cold, Frigid	Regular	Cold	Frigid	
Applicable Grains		Paddy, Wheat	Paddy, Wheat, Maize	Paddy, Wheat		Paddy, Wheat, Maize	
Temp. Increase Range Ambient Temp.		+26~50℃	+16~76℃	+25~42℃	+41~71℃	+21~86℃	
Boiler Capacity Approx. ton/hr		0.6	0.8	1.0	1.8	2.2	
Boiler Pressure Approx. kg/cm²		7					
Electricity		3P, 220V/380V/415V/440V, 50/60Hz					
Safety Devices		Thermo-over relay, Air pressure switch, Full load buzzer, Timer, Control fuse					

• The required thermal energy is for reference only. Actual data will differ among grain variety, impurity rate, and drying condition. • Diesel/Rice Husk & Gas/Rice Husk Dual-type are made to order. • The specification and graph are for reference only. Actual specification of SUNCUE product shall be based on the Sales Confirmation which customers sign and delivered products. • The density, composition and pressure of natural gas vary at different locations, thus thermal energy per m³ also varies. Ex: 8,900Kcal/m³ in Taiwan, 11,000Kcal/m³ in Japan, 8,400Kcal/m³ in Sichuan province of China.